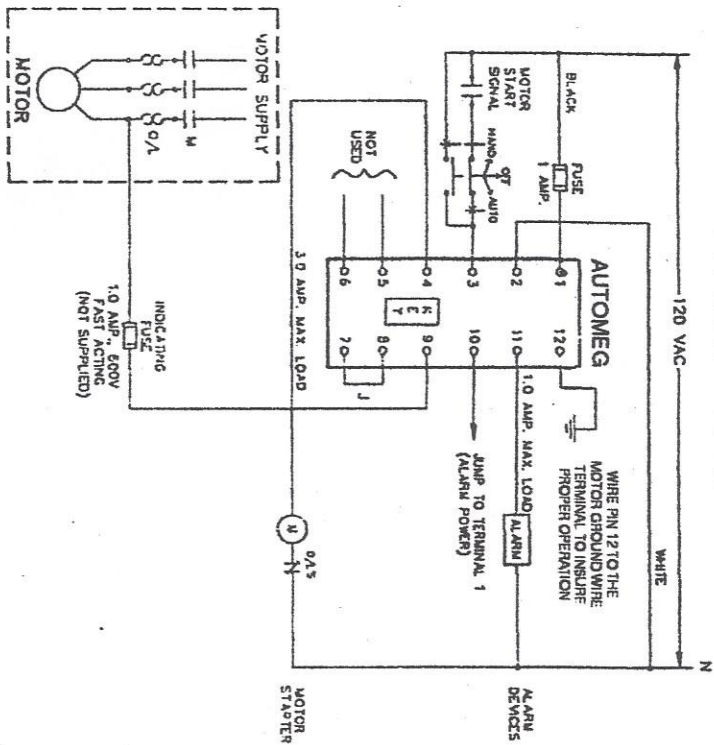


AUTOMEG 12 PIN WIRING DIAGRAM FOR ONE(1) MOTOR

TYPICAL WIRING



OUTLINE DIMENSIONS

DESCRIPTION OF OPERATION

- THE 'POWER ON' LIGHT IS LIT WHEN 120VAC IS APPLIED TO PINS 1 AND 2.
- WHEN THE MOTOR START SIGNAL IS APPLIED TO PIN 3, THE DEVICE MONITORS THE MOTOR WINDINGS FOR 10 SECONDS THROUGH PINS 9 & 12.
- A POTENTIAL OF 500 VOLTS AT LESS THAN 0.25MA IS USED. THE '500VDC/ON' LIGHT INDICATES WHEN 500VDC IS APPLIED TO THE MOTOR WINDING.
- IF THE MOTOR WINDING INSULATION RESISTANCE EXCEEDS 1 MEGOHM, THE MOTOR WILL START.
- IF THE MOTOR WINDING INSULATION RESISTANCE IS EQUAL TO OR LESS THAN 1 MEGOHM, THE 'LOW MEG' LIGHT WILL COME ON AND THE ALARM SIGNAL (PIN 11) WILL BE ACTIVATED. HOW EVER, THE MOTOR WILL START.
- IF AN OPTIONAL 'INHIBIT' AUTOMEG IS SUPPLIED, THE ALARM SIGNAL WILL BE ACTIVATED AND THE MOTOR WILL NOT START. THE 'RESET' BUTTON MUST BE PUSHED AFTER A 'LOW MEG' ALARM.
- PUSHING THE 'MEG TEST' BUTTON TESTS THE INTERNAL CIRCUITRY OF THE AUTOMEG. THE GREEN 'POWER' LIGHT WILL GO OUT AND THE RED '1 MEG' LIGHT WILL LIGHT. ALSO ACTIVATING THE ALARM CIRCUIT. THE 'MEG TEST' BUTTON WILL NOT OPERATE WHILE THE MOTOR IS RUNNING.
- THE 'EMERGENCY BYPASS ONLY' SWITCH TURNS THE AUTOMEG OFF.

NOTE:

THIS CONFIGURATION CAN ONLY BE USED WITH MOTOR POWER SUPPLIES OF 500 VOLTS OR LOWER. REFER TO THE FACTORY FOR MOTOR POWER SUPPLIES HIGHER THAN 500 VOLTS. THE AUTOMEG MAY BE USED WITH SUPPLIES AS HIGH AS 5,000 VOLTS IF A SPECIAL INTERPOSING RELAY IS USED.

UL FILE NO. E138380

AUTOMEG
INSULATION TESTERS